

## 1/5 Cambridge Road Manurewa

**Laugh all the way to the bank.**

First Home Buyer? What are you waiting for? This solid and recently Fully renovated property is calling you home!

The owners have enjoyed entertaining family using the extended living space outside on the covered front deck. There is even more room on the deck out the back which is handy to the kitchen.

Whether you are a first home buyer jumping on the property ladder or an investor, this could be for you!

Here are a few of the reasons you must view this great property:

- \* Three spacious bedrooms
- \* Open plan modern kitchen, dining and living area
- \* Private fenced section



**FOR SALE**

Sold

**VIEW**

[manurewa.ljhooker.co.nz/EQFGER](https://manurewa.ljhooker.co.nz/EQFGER)

**CONTACT**

**Madu Kari** 027 556 6195

**LJ HOOKER MANUREWA**

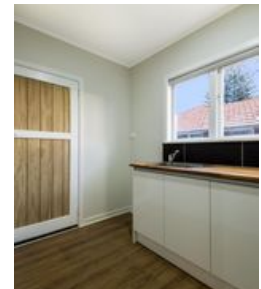
(09) 268 0454

- \* Built in cupboards in all bedrooms
- \* Plenty of off street parking
- \* Carport

Rental investors looking for a property in an area that attracts good cash flow must view this property.

Come on through to one of our open homes and meet the team or call Madu on 027 556 6195.

PLEASE NOTE: Specified floor and land area sizes have been obtained from sources such as Property Smarts, Auckland Council (LIM) or Title documents. They have not been measured by the Salesperson or LJ Hooker - Realty 2000 Limited. We recommend you seek your own independent legal advice if these sizes are material to your purchasing decision.



## More About this Property

<b>PROPERTY ID</b>	EQFGER
<b>PROPERTY TYPE</b>	Residential
<b>HOUSE SIZE</b>	90.00 m <sup>2</sup>
<b>INCLUDING</b>	Toilets (1), Built-In Wardrobes, Close to Schools, Close to Shops, Close to Transport

Licensed Real Estate Agents (REAA2008)

## LJ Hooker Manurewa - Realty 2000 Ltd - Licensed Real Estate Agent REAA 2008

CONTACT: Madu Kari  
 EMAIL: [madu.manurewa@ljhooker.co.nz](mailto:madu.manurewa@ljhooker.co.nz)  
 MOBILE: 027 556 6195  
 PHONE: (09) 268 0454  
 FAX: (09) 268 0452

### DISCLAIMER

The above information has been furnished to us by the Vendor. We have not verified whether or not that information is accurate and do not have any belief one way or the other in its accuracy. We do not accept any responsibility to any person for its accuracy and do no more than pass it on. All interested parties should make and rely upon their own enquiries in order to determine whether or not this information is in fact accurate.



[www.ljhooker.co.nz](http://www.ljhooker.co.nz)

Residential | Commercial | Rural | Land Sections | Coastal